



CONFIGURING *your computer*

user reference guide



This book contains necessary instructions to setup your computer.

Clearly **different.**

CONTENTS

COMPUTER CONFIGURATION INSTRUCTIONS:	3
CONFIGURING YOUR COMPUTER FOR WINDOWS	
Windows XP	3
Window 98, Me, NT & 2000	5
CONFIGURING YOUR COMPUTER FOR MAC	
Mac OS X	6
Mac OS 8/9	7
SUPPORT SERVICES:	8

CONFIGURING YOUR COMPUTER FOR WINDOWS XP



figure 1



figure 2

1. Select *Start* then *Control Panel*.
(figure 1)

Note: If you do not see *Control Panel*, select *Settings* then *Control Panel*.
(figure 2)

2. Click *Network and Internet Connections*.
(figure 3)



figure 3

CONFIGURING YOUR COMPUTER FOR WINDOWS XP

3. Click *Internet Options*. (figure 4)
4. Select the *Connections* tab. (figure 5)
5. Select *Never dial a connection*.

Note: If the *Never dial a connection* option is disabled (grayed out), skip to the next step.

6. Click the *LAN Settings* button.
7. Verify all boxes are *unchecked* and click *OK*. (figure 6)
8. Click *OK*. (figure 5)



figure 4



figure 5

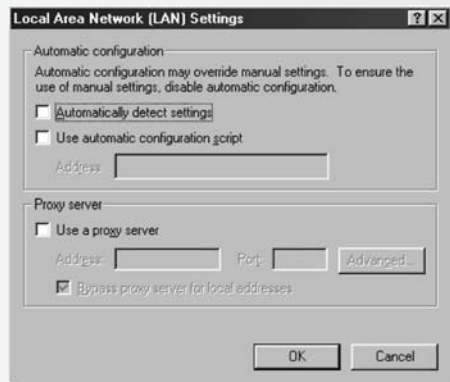


figure 6

CONFIGURING YOUR COMPUTER FOR WINDOWS 98, ME & NT

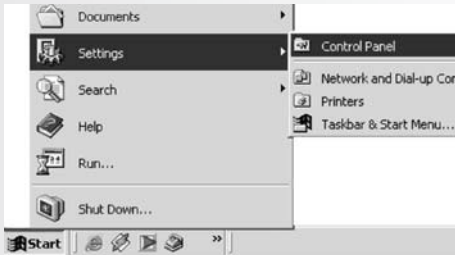


figure 7

figure 8



figure 9

1. Select *Start*, then *Settings*, then *Control Panel*. (figure 7)
2. Double-click *Internet Options*. (figure 8)
3. Select the *Connections* tab. (figure 9)
4. Select *Never dial a connection*.

Note: If the *Never dial a connection* option is disabled (grayed out), skip to the next step.

5. Click the *LAN Settings* button.
6. Verify all checkboxes are *unchecked* and click *OK*. (figure 10)
7. Click *OK*. (figure 9)

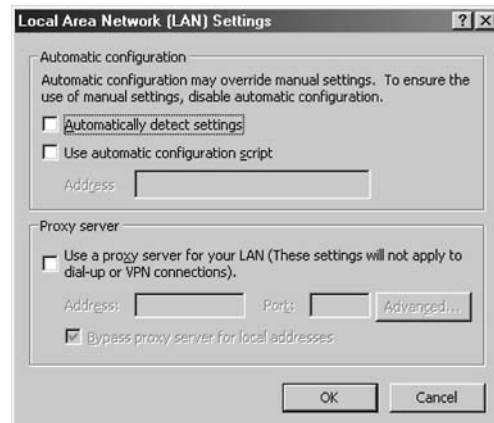


figure 10

CONFIGURING YOUR COMPUTER FOR MAC OS 8/9

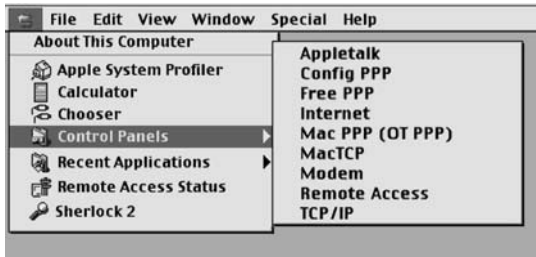


figure 11

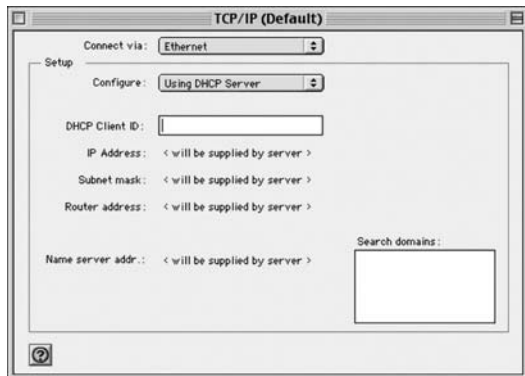


figure 12

1. Select *Apple*. (figure 11)
2. Select *Control Panels*.
3. Select *TCP/IP*.
4. Select *Ethernet* from the *Connect via* box. (figure 12)
5. Select *Using DHCP Server* from the *Configure* box.
6. Close the TCP/IP window.

Note: If asked to save the current configuration, click *Save*.

CONFIGURING YOUR COMPUTER FOR MAC OS X

1. Select *Apple*. (figure 13)
2. Select *System Preferences*.
3. Click *Network*. (figure 14)
4. Select the *TCP/IP* tab. (figure 15)
5. Select *Built-in Ethernet* from the *Show* box.
6. Select *Using DHCP* from the *Configure* box.
7. Click *Apply Now*.
8. Close the *Network* window.



figure 13



figure 14



figure 15

SUPPORT SERVICES

help contacts

Need more help? Please contact the appropriate number listed below to insure prompt assistance with your problem.

**Contact TDS Metrocom Technical Support 1.877.410.5971
Available 24 hours a day, seven days a week, 365 days a year.**

- Cannot connect to Internet
- Need help configuring your e-mail on your computer
- Cannot send or receive e-mail

billing issues

Contact TDS Metrocom Customer Care 1.877.208.5111

Mon.-Fri. 6 a.m.-10 p.m. CST

Sat. 8 a.m.-5 p.m. CST

Sun. Closed

- Telephone issues (call waiting, forwarding, line noise)
- Inquire about or change your account

If you have other questions or concerns, please feel free to contact one of the numbers above and your call will be directed to the appropriate person.